

SHARP

HEAVY DUTY CNC LATHE

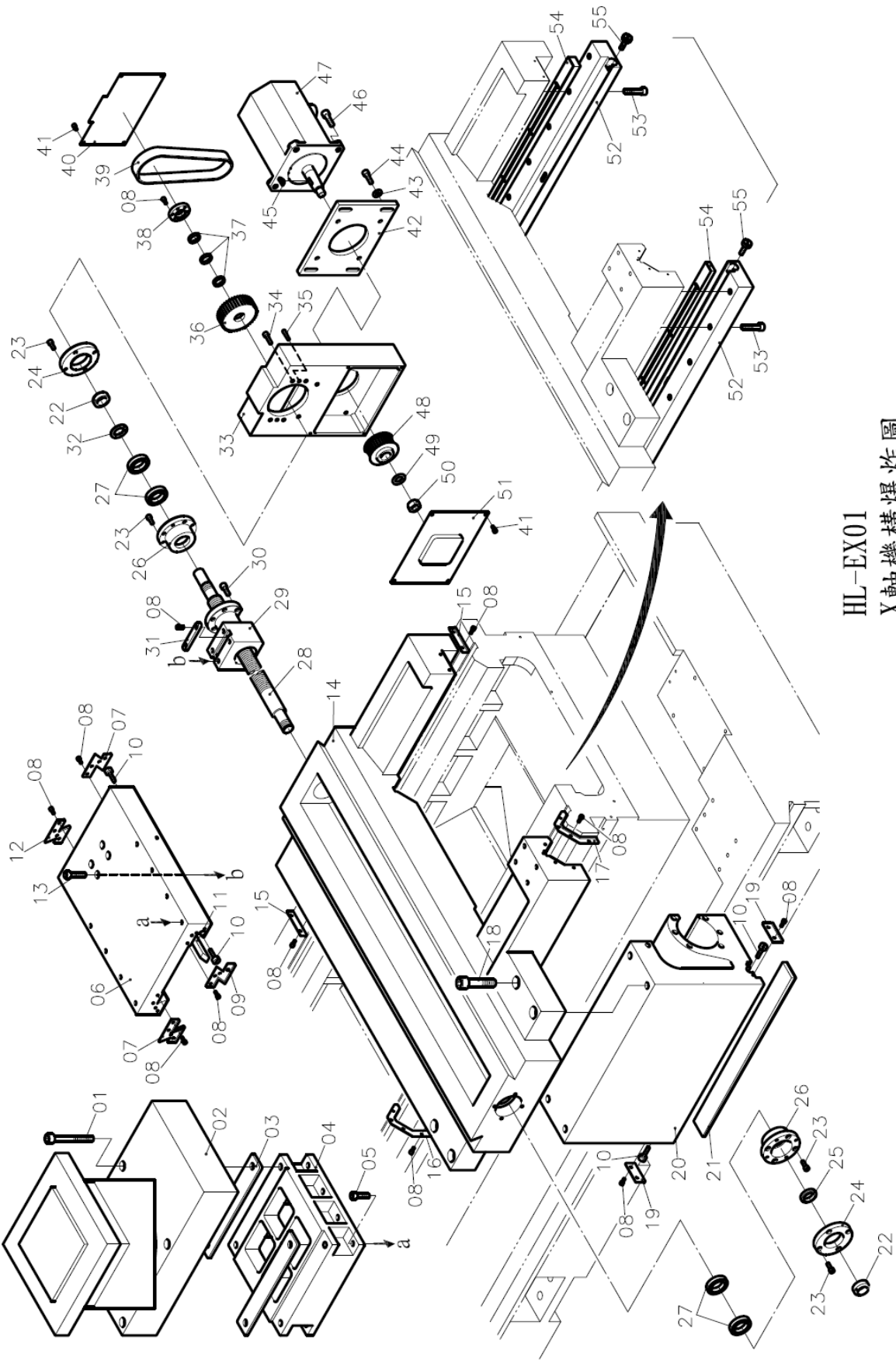
MODEL: STA series
PARTS LIST

Index

NO	DESCRIPTION	Page
1	X-Axis assembly	1 ~ 3
2	Spindle motor assembly	4 ~ 5
3	Z-Axis assembly	6 ~ 8
4	Headstock assembly (1)	9 ~ 11
5	Headstock assembly (2)	12 ~ 13
6	Headstock assembly (3)	14 ~ 15

X-Axis Assembly

Index No.: HL-EX01



HL-EX01
X軸機構爆炸圖

X-Axis Assembly

Index No.: HL-EX01

No.	Part No.	Description	Q'ty	Remark
1		Cap screw	4	M16x130
2		Turret	1	VDI-350
3	HL-3012	Turret pad	2	
4	HL-3011	Turret heighten block	1	
5		Cap screw	8	M12x40
6	HL-3002	Cross slide	1	
7	RHL-3019	Wiper for Cross slide -2	2	
8		Cap screw	40	M6x14
9	RHL-3018	Wiper for Cross slide -1	1	
10		Screw	4	M8
11	RHL-3016	Saddle gib	1	
12	RHL-3020	Wiper for cross slide -3	1	
13		Cap screw	1	M12x50
14	HL-3001	Saddle	1	
15	HL-3010	Wiper for Saddle -3	2	
16	HL-3009	Wiper for Saddle -2	1	
17	HL-3008	Wiper for Saddle -1	1	
18		Cap screw	4	M20x90
19	RHL-3037	Wiper for Saddle support	2	
20	HL-3006	Apron	1	
21	HL-3007	Strip	1	
22	TM-YSF-30	Nut	2	YSF-M30
23		Cap screw	16	M8x20
24	RHL-3006	Cover of X-axis bearing	2	
25	RHL-3015	Washer of X-axis bearing	1	
26	RHL-3005	X-axis screw bearing stand	2	
27		Deep groove ball bearing	4	30TAC
28	HL-3003	X-axis ball screw	1	
29	RHL-3013	Base of X-axis screw nut	1	

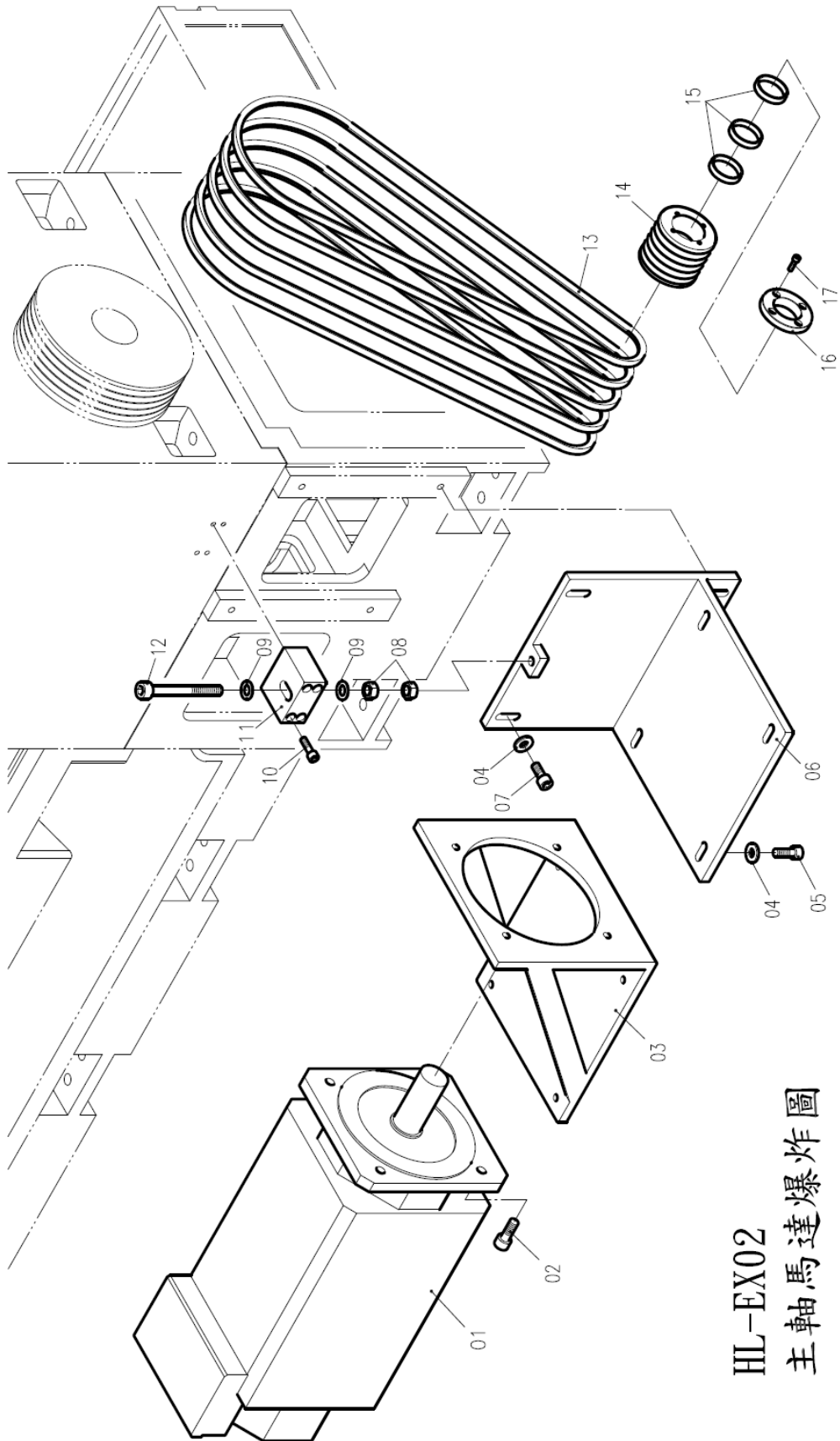
X-Axis Assembly

Index No.: HL-EX01

No.	Part No.	Description	Q'ty	Remark
30		Cap screw	5	M10x25
31	RHL-3014	Fixed key	1	
32	RHL-3007	Washer	1	
33	RHL-3004	X-axis motor plate	1	
34		Cap screw	6	M8x30
35		Taper pin	2	ψ8x30
36	RHL-3008	Pulley of X-axis screw	1	
37		Force ring	3	28x32x6.3
38	RHL-3009	Cover of X-axis pulley	1	
39		X-axis belt	1	8M-720-32
40	RHL-3029	Cover for X-axis motor base	1	
41		Cap screw	8	M6x12
42	HL-3005	X-axis motor plate	1	
43		Washer	4	M10
44		Cap screw	4	M10x30
45		Key	1	7x25
46			4	M12x35
47		X-axis motor	1	FANUC α22i
48	HL-3004	X-axis motor pulley	1	
49		Washer	1	M10
50		Nut	1	M20x1.5
51	RHL-3040	Cover of X-axis pulley	1	
52	RHL-3021	Lining plate	2	
53		Cap screw	14	M12x55
54	RHL-3024	Strip of Lining plate	2	
55		Screw	4	M10

Spindle Motor Assembly

Index No. : HL-EX02



HL-EX02
主軸馬達爆炸圖

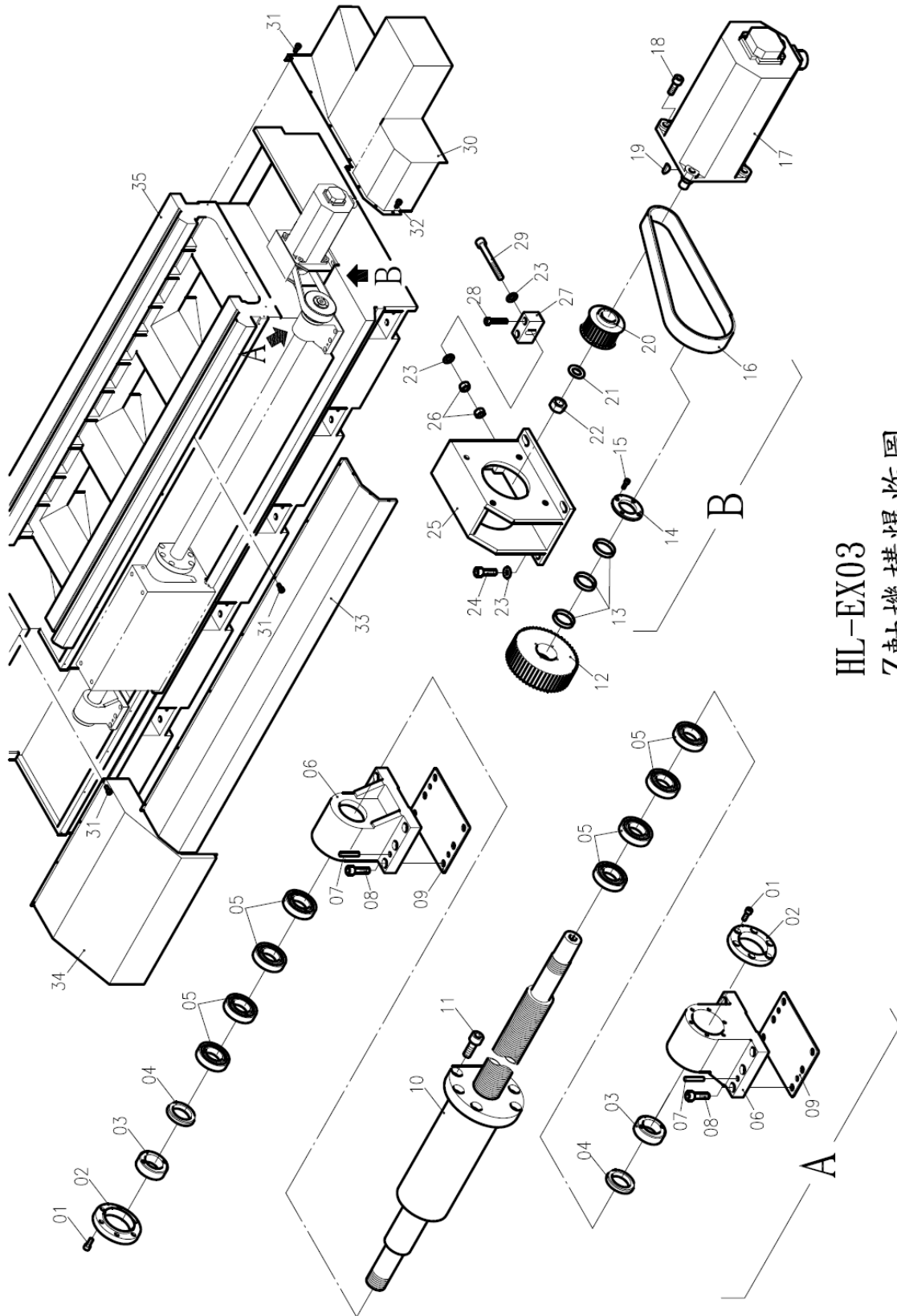
Spindle Motor Assembly

Index No. : HL-EX02

No.	Part No.	Description	Q'ty	Remark
1		Spindle motor	1	FANUC α40i
2		Cap screw	4	M18x45
3	HL-2002	Bracket of spindle motor	1	
4		Washer	8	M16
5		Cap screw	4	M16x45
6	RHL-2005	Spindle motor stand	1	
7		Cap screw	4	M16x50
8		Nut	2	M20
9		Washer	2	M20
10		Cap screw	4	M12x40
11	RHL-2003	Adjusting block	1	
12		Cap screw	1	M20x170
13		Spindle belt	5	5V-850
14	HL-2003	Pulley of spindle motor	1	
15		Force ring	3	Match with the size of spindle motor
16	HL-2004	Cover	1	
17		Cap screw	4	M8x25

Z-Axis Assembly

Index No.: HL-EX03



HL-EX03
Z軸機構爆炸圖

Z-Axis Assembly

Index No.: HL-EX03

No.	Part No.	Description	Q'ty	Remark
1		Cap screw	12	M8x20
2	RHL-1004	Z-axis bearing cover	2	
3		Nut	2	YSK-M45
4	RHL-1005	Washer	2	
5		Ball bearing	8	45TAC
6	RHL-1003	Z-axis screw bracket	2	
7		Taper pin	4	φ10x50
8		Cap screw	12	M12x40
9	HL-1003	Plate	2	
10	HL-1002	Z-axis ball screw	1	
11		Cap screw	6	M16x40
12	RHL-1011	Pulley of Z-axis screw	1	
13		Force ring	3	42x48x8
14	RHL-1018	Cover	1	
15		Cap screw	4	M6x16
16		Z-axis belt	1	8M-960
17		Z-axis motor	1	FANUC α30i
18		Cap screw	4	M12x30
19		Key	1	7x25
20	HL-1005	Z-axis motor pulley	1	
21		Washer	1	M20
22		Nut	1	M20x1.5
23		Washer	6	M12
24		Cap screw	4	M12x35
25	HL-1004	Z-axis motor plate	1	
26		Nut	2	M12
27	HL-1006	Z-axis motor adjusting rod	1	
28		Cap screw	2	M8x45
29		Cap screw	1	M12x100

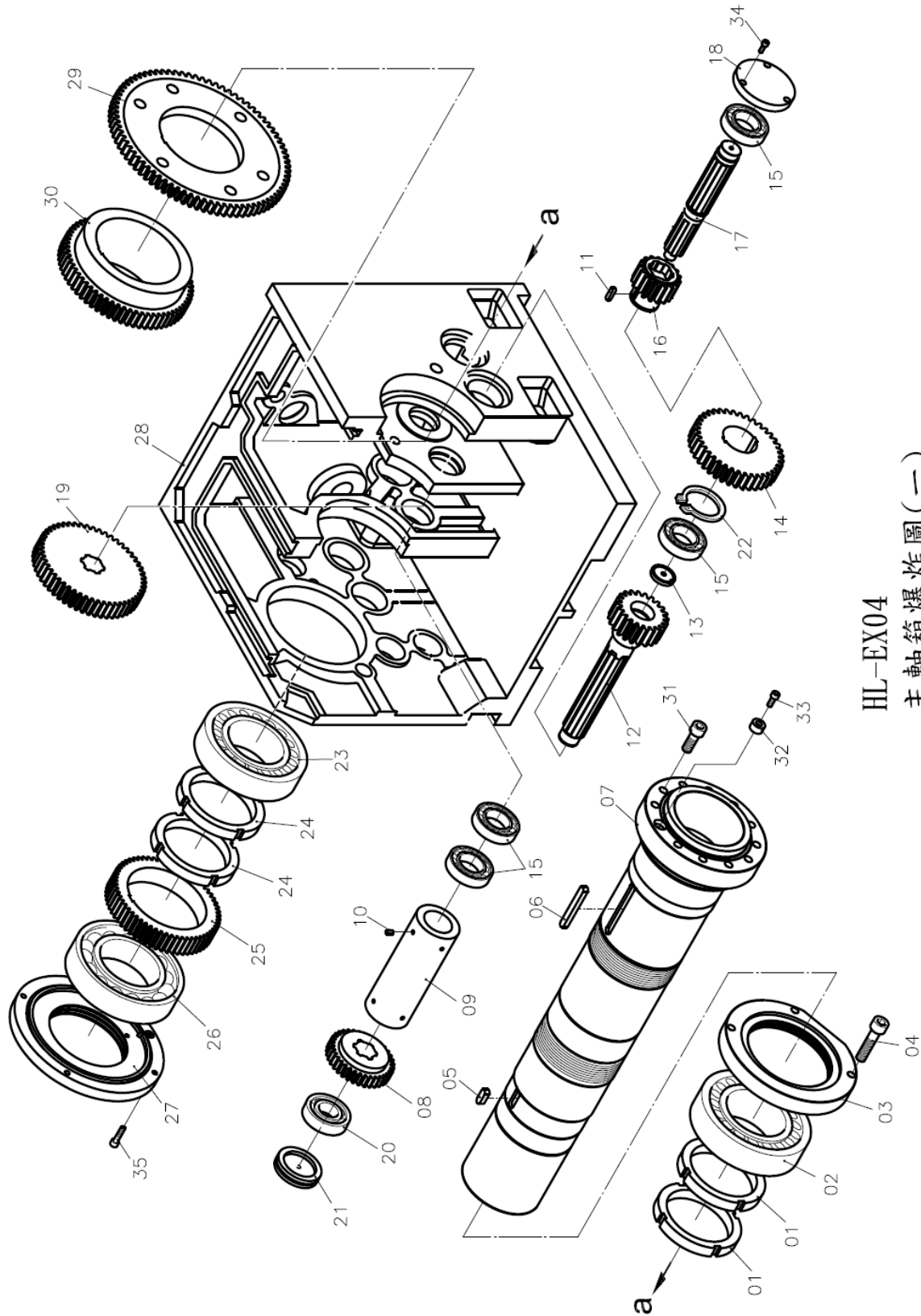
Z-Axis Assembly

Index No.: HL-EX03

No.	Part No.	Description	Q'ty	Remark
30	HL-1009	Rear cover -1	1	
31		Cap screw	24	M6x12
32		Cap screw	3	M6x10
33	HL-1007	Z-axis screw cover	1	
34	HL-1008	Bed front cover	1	
35	HL-1001	Bed	1	

Headstock Assembly (1)

Index No.: HL-EX04



HL-EX04
主軸箱爆炸圖(一)

Headstock Assembly (1)

Index No.: HL-EX04

No.	Part No.	Description	Q'ty	Remark
1	HL-2031	Nut (front)	2	
2		Tapered roller bearing	1	32040X
3	HL-2034	Cover C1(front)	1	
4		Cap screw	4	M20x80
5		Key	1	18x12x45
6		Key	1	18x12x140
7	HL-2002		1	
8	HL-2018	Space ring	1	
9	HL-2090	Bushing	1	
10		Set screw	8	M6x12
11		Key	1	12x8x30
12	HL-2017	Gear B1	1	
13	HL-2022	Pad	1	
14	HL-2026	Gear B7	1	
15		Deep groove ball bearing	4	6211
16	HL-2025	Gear B6	1	
17	HL-2023	Shaft B2	1	
18	HL-2014	Cover A2, B2	1	
19	HL-2024	Gear B5	1	
20		Deep groove ball bearing	1	6309
21	HL-2027	Cover B1	1	
22		C type circlip	1	S78
23		Tapered roller bearing	1	32038X
24	HL-2032	Nut (back)	2	
25	HL-2033	Gear C3	1	
26		Deep groove ball bearing	1	6036
27	HL-2035	Cover C2 (back)	1	
28	HL-2001	Headstock	1	
29	HL-2029	Gear C1	1	

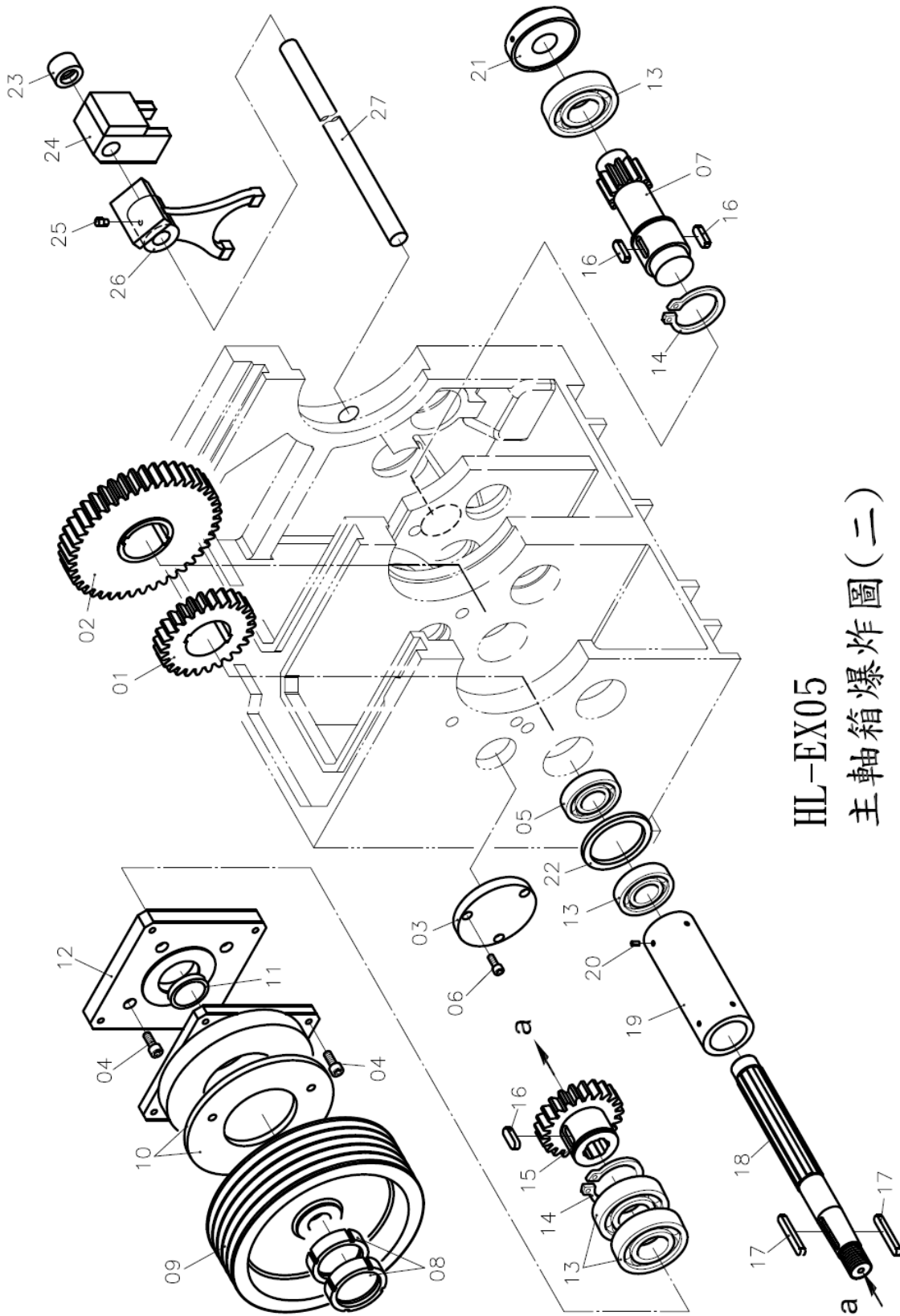
Headstock Assembly (1)

Index No.: HL-EX04

No.	Part No.	Description	Q'ty	Remark
30	HL-2030	Gear C2	1	
31		Cap screw	11	M20x40
32	HL-2092	Bushing	1	
33		Cap screw	1	M10x25
34		Cap screw	3	M8x20
35		Cap screw	4	M10x40

Headstock Assembly (2)

Index No.: HL-EX05



HL-EX05
主軸箱爆炸圖(二)

Headstock Assembly (2)

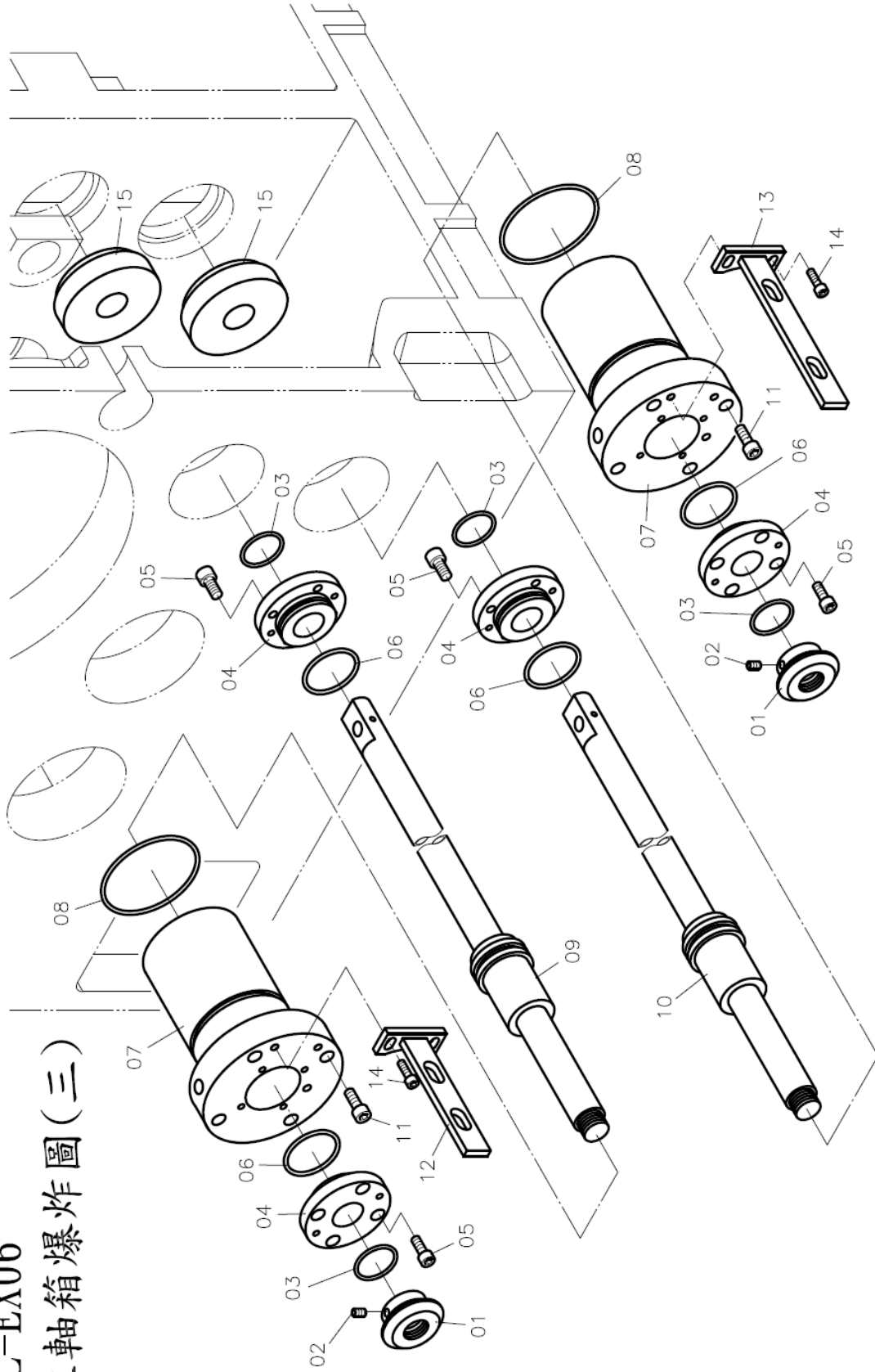
Index No.: HL-EX05

No.	Part No.	Description	Q'ty	Remark
1	HL-2006	Gear A2	1	
2	HL-2011	Gear A5	1	
3	HL-2052	Cover L1, N	1	
4		Cap screw	8	M10x45
5		Deep groove ball bearing	1	6211
6		Cap screw	3	M8x20
7	HL-2010	Gear A2	1	
8	HL-2016	Nut	2	
9	HL-2015	Pulley	1	
10		Brake	1	TMB20
11		oil seal	1	TC45608
12	HL-2013	Cover A1	1	
13		Deep groove ball bearing	4	6309
14		C- type circlip	2	S65
15	HL-2005	Gear A1	1	
16		Key	3	12x8x35
17		Key	2	10x8x70
18	HL-2004	Shaft A	1	
19	HL-2091	bushing	1	
20		Set screw	8	M6x12
21	HL-2012	pump suppot	1	
22	HL-2009	Spacer ring A	1	
23	HL-NC-H15	Stuff	1	
24	HL-NC-H01	Fork	1	
25	HL-2055	Pin	1	

Headstock Assembly (3)

Index No.: HL-EX06

HL-EX06
主軸箱爆炸圖(三)



Headstock Assembly (3)

Index No.: HL-EX06

No.	Part No.	Description	Q'ty	Remark
1	HL-NC-H13	limit switch touch button	2	
2		Set screw	2	M6x6
3		O-ring	4	G25
4	HL-NC-H07	Cover of hydraulic cylinder	4	
5		Cap screw	16	M6x12
6		O-ring	5	G40
7	HL-NC-H02	hydraulic cylinder	2	
8		O-ring	2	G75
9	HL-NC-H05	shaft of hydraulic cylinder -short	1	
10	HL-NC-H04	shaft of hydraulic cylinder -long	1	
11		Cap screw	16	M8x28
12	HL-NC-H10	Fixed Holder	1	
13	HL-NC-H11	Fixed Holder	1	
14		Cap screw	4	M6x16
15	HL-NC-H14	Stuff	2	