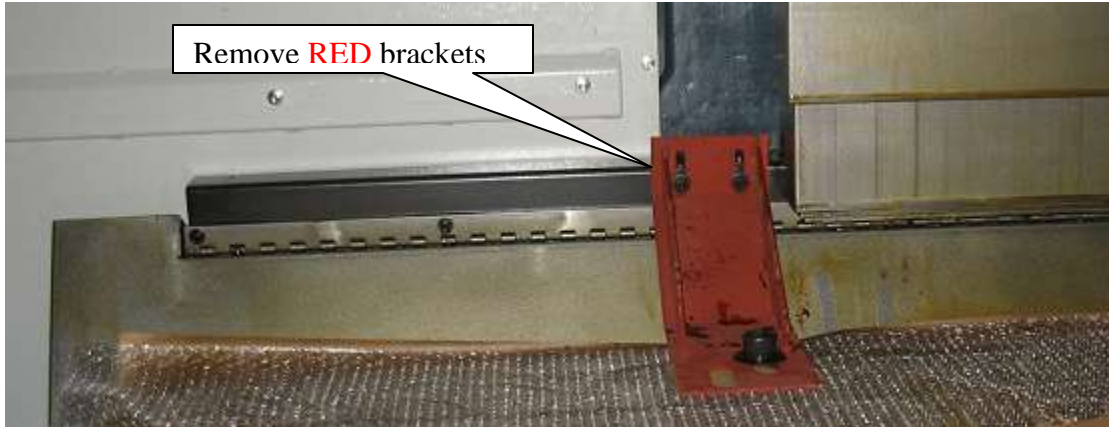


## SVG 6332 Installation Procedure

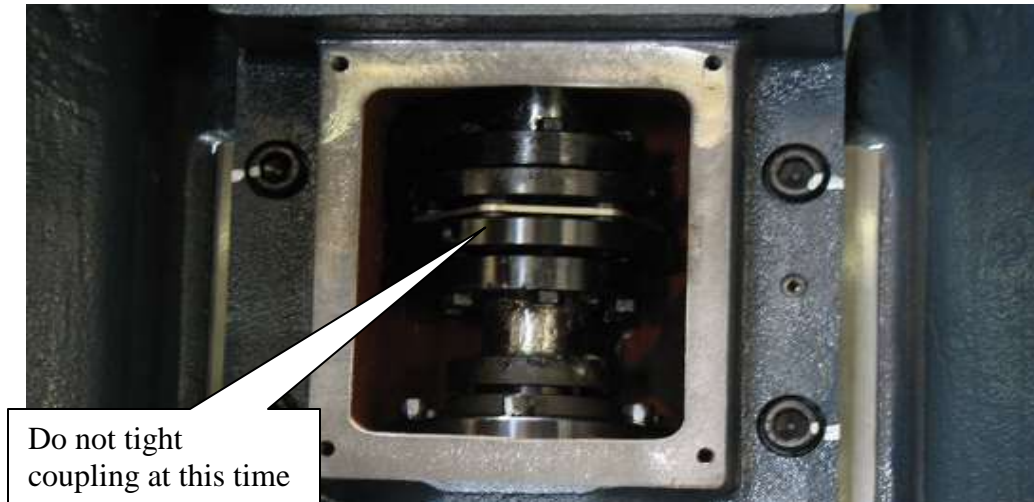
1. Remove **RED** brackets, which lock the X-axis and Y-axis.



2. Remove the two lifting hooks.



3. Install Z-axis motor. Apply little grease between ball screw and coupling before connect motor to the ball screw. Connect cables to the motor.

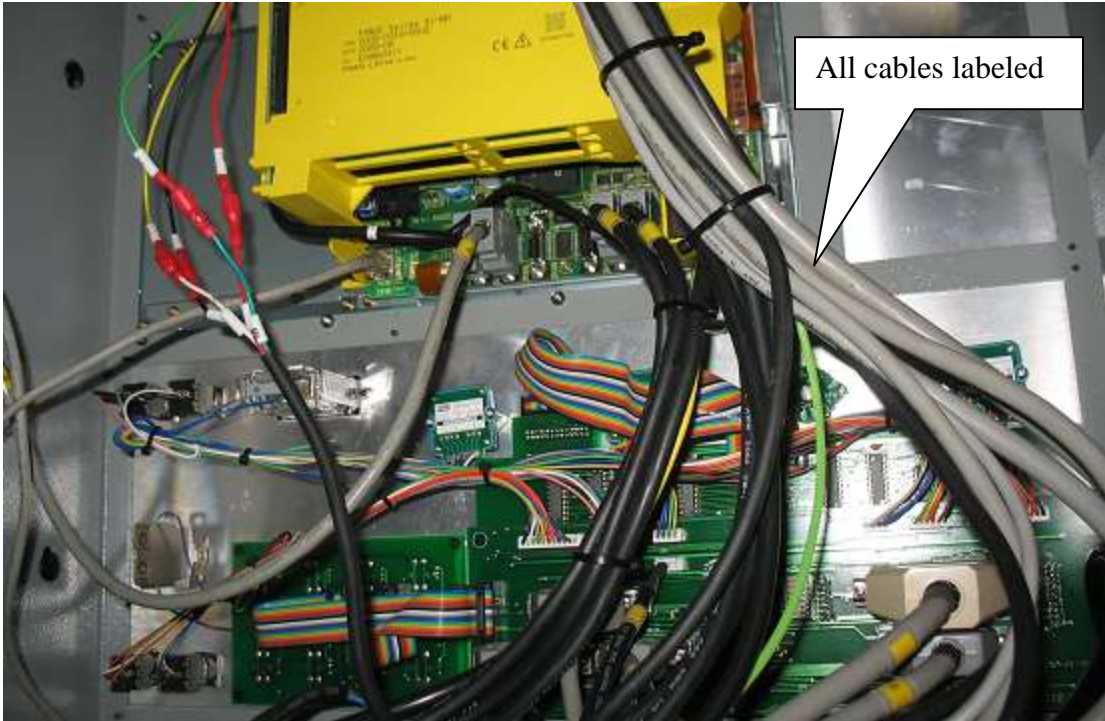


## SVG 6332 Installation Procedure

4. Connect power and air to the machine. The machine requires AC220, 3 Phase. #6 or #8 gage cable. We need 75A breaker on the wall. Adjust air pressure to 90PSI.
5. Install operator's panel and connect all the cables and wires. They are all labeled.



## SVG 6332 Installation Procedure

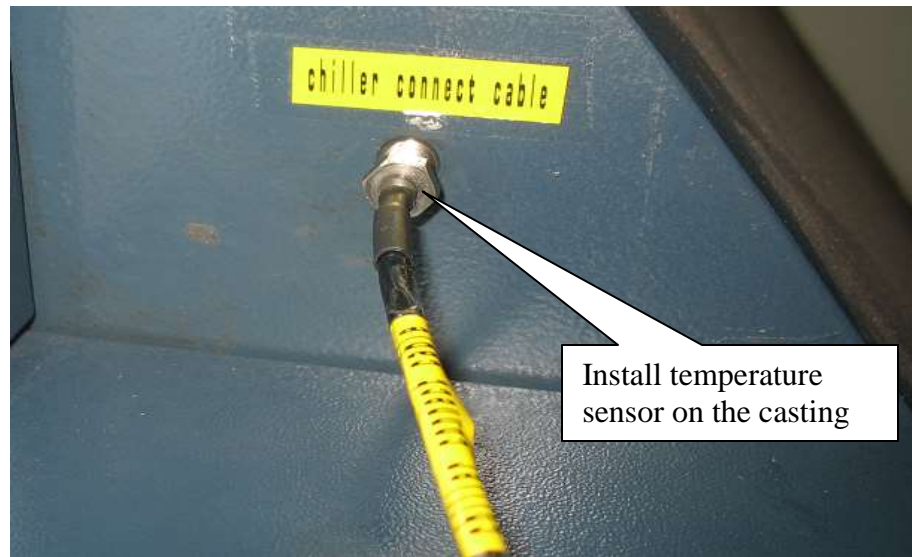
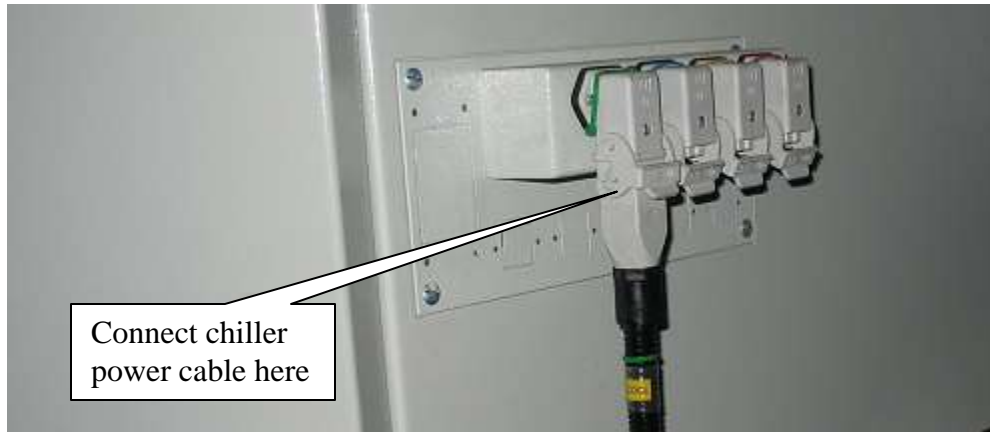


6. Install signal tower and connect wires.



7. Connect inlet and outlet hoses to the chiller. All hoses are labeled. Connect chiller power cable to the machine. Connect temperature sensor to the machine.

# SVG 6332 Installation Procedure





## SVG 6332 Installation Procedure

8. Chiller oil was drain out before shipping; we need to add oil to the gearbox from top of the machine. There is a plastic hose prepared for fit oil. Make sure the oil level will be in between H and L lines on the gage.

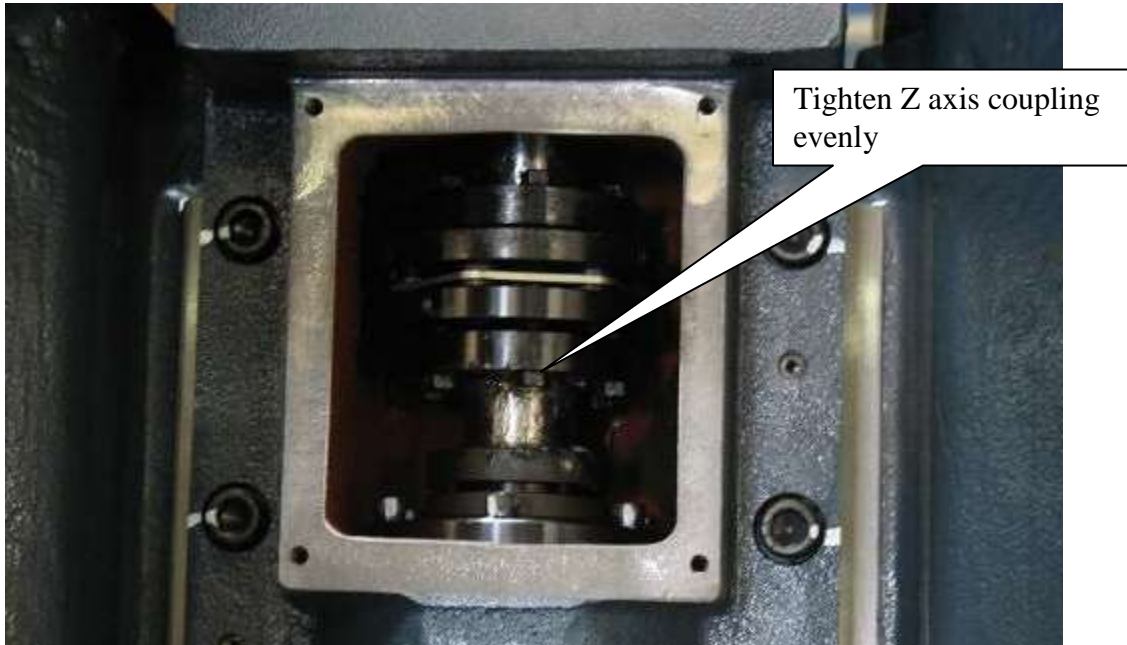


9. Power ON the machine. Watch the hydraulics gage to see if the incoming phase is correct. If not, swap any two power lines.



## SVG 6332 Installation Procedure

10. This machine comes with absolute encoder motor. Ignore alarm 300 for Z-axis, use MPG turn Z-axis **UP** slowly and tighten the coupling evenly.

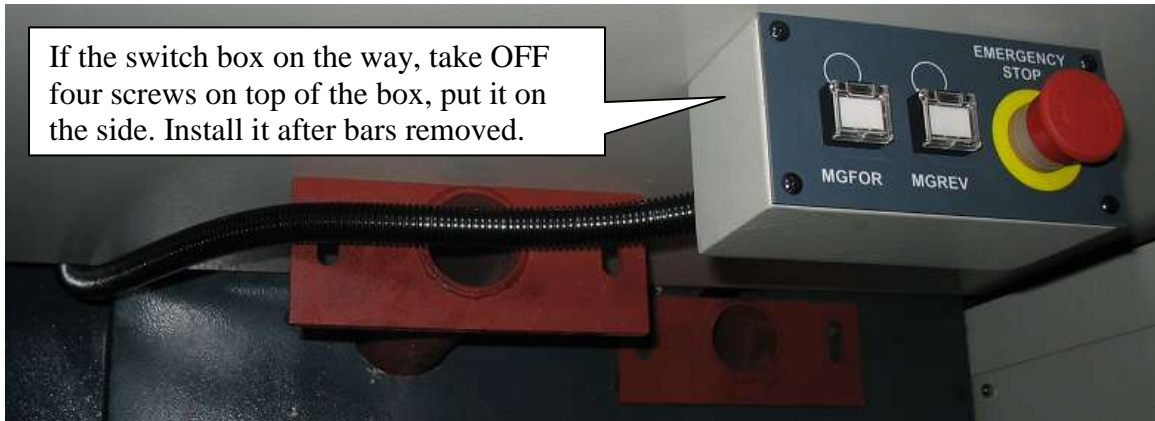


11. Remove two brackets that support Z-axis.



12. Use MPG move Z-axis down slowly until the counter weight chains are tight. Then remove the two counter weight supporting bars.

## SVG 6332 Installation Procedure

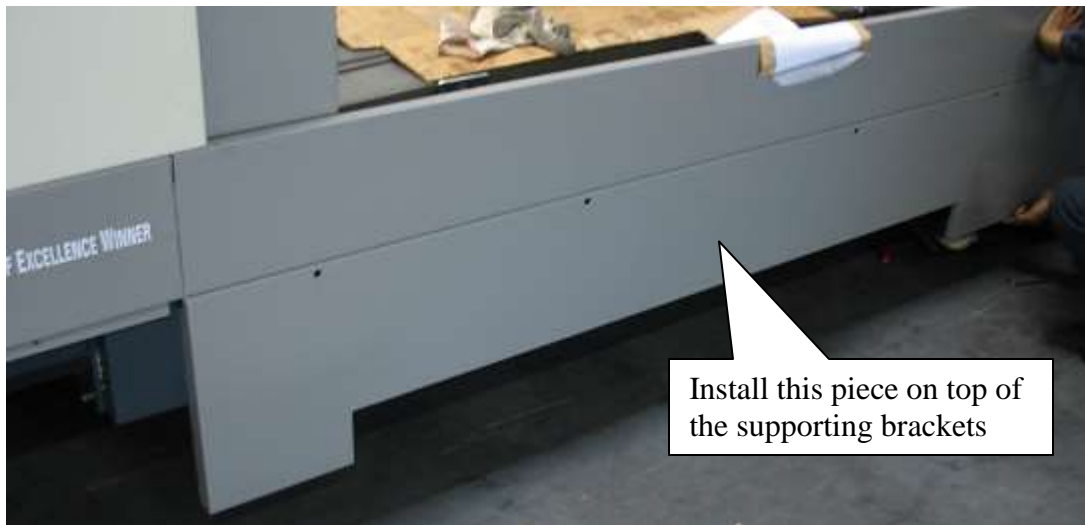
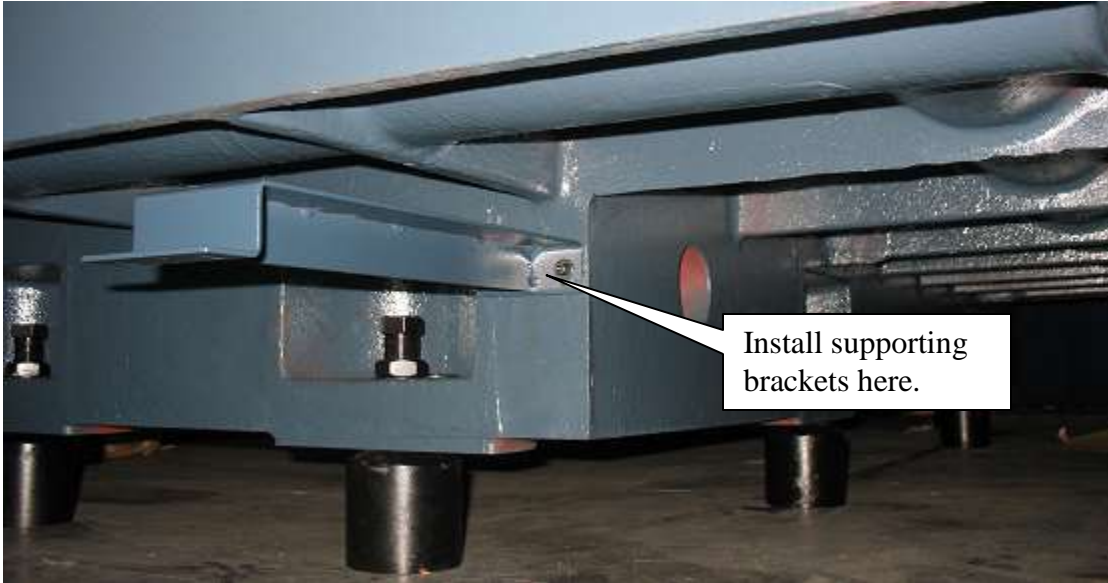


13. Find home position, and then set parameter 1815.4 = 1. Power OFF then ON the control. Z-axis home position should be set.
14. This machine use G30 for ATC position. Find ATC position then set correct number to the parameter 1241 for Z axis second zero.
15. Install Y-axis front way cover. Then install sheet metal covers to the machine.





## SVG 6332 Installation Procedure



16. Install chip auger.



## SVG 6332 Installation Procedure

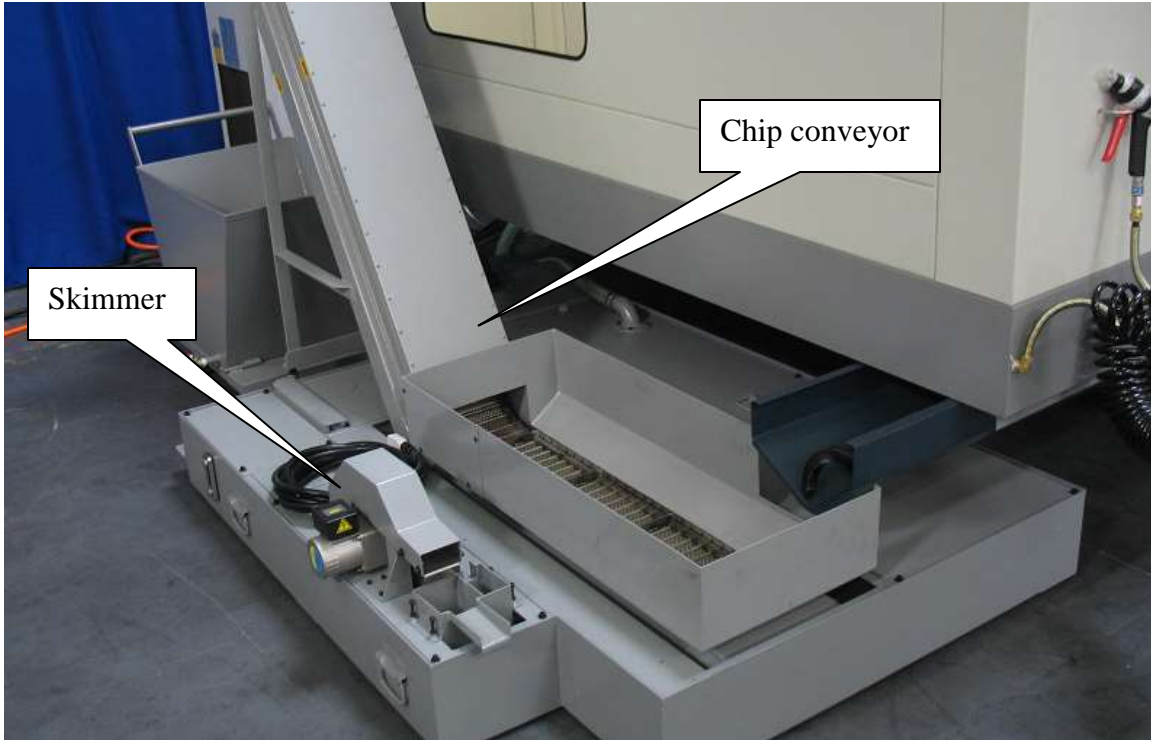


17. Install chip auger guard.



18. Set coolant tank in position; install chip conveyor and skimmer.

# SVG 6332 Installation Procedure



19. Connect coolant hose and chip wash hose.

